



VEXO110

10" high-output 2-way loudspeaker

Highlights:

- DuraCoat™ texture paintwork
- High sound pressure levels with tight driver response
- Ball impact resistance
- Horizontal and vertical mounting
- User friendly mounting
- 125° inclination
- 70V/100V transformer available

The VEXO series are compact 2-way bass-reflex loudspeakers and come in 3 different models, each of them with different size and performance meeting the requirements of every application. The VEXO series loudspeakers consist of an active and passive versions. The low frequency transducer, which is made out of high quality materials, is combined with a 1.7" voice coil compression driver, enabling high sound pressure levels and a tight driver response with a rotatable 90° x 70° coverage pattern for a wide range of applications.

Thanks to the unique driver composition, the VEXO110 delivers a clear and natural sound with an RMS power of 300 Watts and a maximum power of 1200 Watt. The frequency range (-10dB) starts from 65Hz up to 20 kHz and the sensitivity (1W/1m) reaches 96dB while a maximum continuous sound pressure level from 121dB can be achieved.

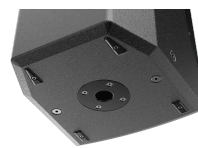
Using an optional 70V/100V line transformer enables the VEXO series to be used in 70V or 100V systems. By removing the back plate and replace it with a 70V/100V backplate on which the module is integrated, the high performance loudspeaker is able to apply in a 70V/100V system.

The construction of the cabinets is made of 12mm plywood with a polyurethane coating, making it resistant for any impact. The front side of the cabinet is finished with a powder coated steel grill with acoustical foam. A recessed carry handle on the rear side makes carrying easy. Positioning and suspension of the speaker is easily achieved by using the standard 35 mm pole adapter on the bottom and the M10 rigging points. Two speaker connectors provide reliable connections with easy link-through to cabinets.

The optional Clever U bracket allows mounting the high power 2-way cabinet both horizontally and vertically. An inclination of 125° in both directions ensures an optimal positioning. The optional MBK bracket even allows mounting the VEXO series to the ceiling which gives the opportunity to install the loudspeaker cleanly in any environment.

Applications:

- Bars, restaurants
- Clubs, discotheques
- Live performances



Impedance:



System specifications:

Speaker type			2-way
Max. Power			1200 W
RMS Power			300 W
Impedance			8 Ω
Sensitivity (1W/1m)			96 dB
Sound Pressure (Max. W/1m)			121 dB
Frequency	Response (\pm 3 dB)	65 Hz - 20 kHz	
Crossover	Type	Passive built-in	
Dispersion	Horizontal	90°	
	Vertical	70°	
Drivers	HF	Compression driver with 1.7" VC and 1" throat	
	LF	10" (2" VC)	
Connectors			2 x Speakon compatible (Linkthrough)
Power	Consumption	Standby	3.2 W
		Idle	22.5 W

Product Features:

Dimensions			329 x 540 x 345 mm (W x H x D)
Weight			17.3 kg
Construction			12 mm high-quality plywood
Finish	Cabinet finishing	Polyurethane coating	
Front finish			Powder coated steel grill with acoustical foam
Mounting & handling	Rigging points	10 x M10	
	Stand fitting	35 mm pole adapter on bottom	
	Carry handles	On top	
Powerdrive mount			Powerdrive type 75 (108 x 50.8 mm)
Colours			Black & White
Accessories	Optional	70V/100V transformer module	